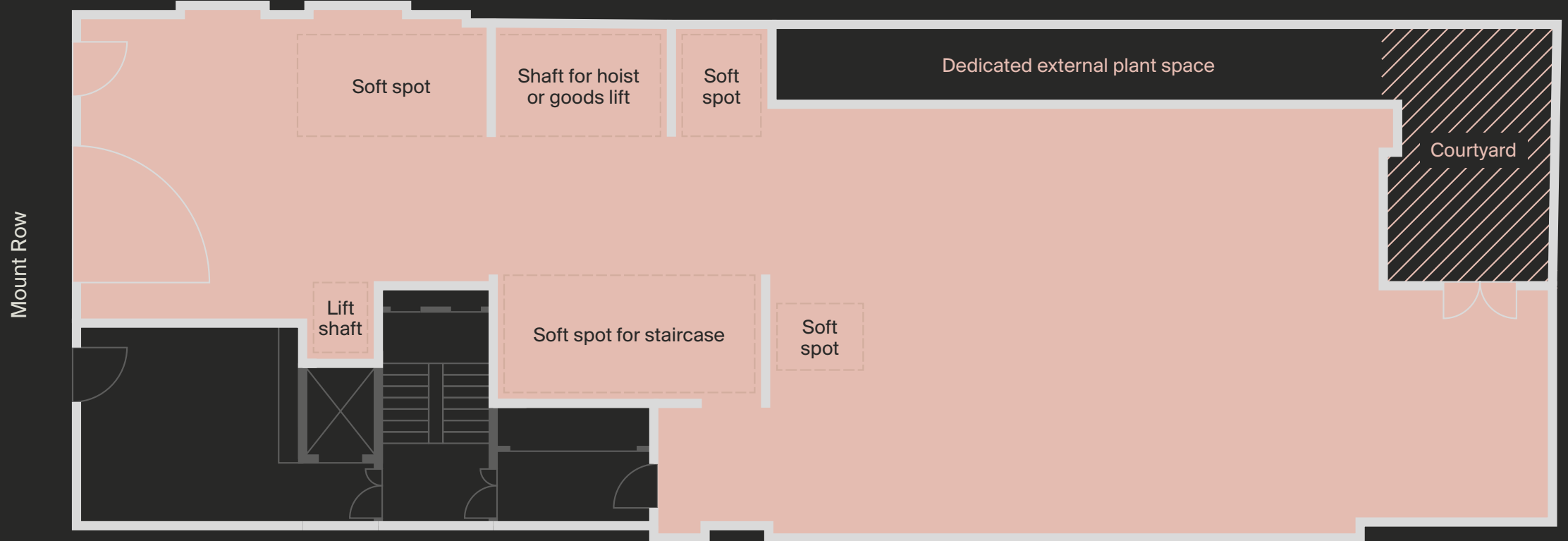


Ground Floor *Plan*

Gross internal area (GIA)
2,943 sq ft
273 sq m



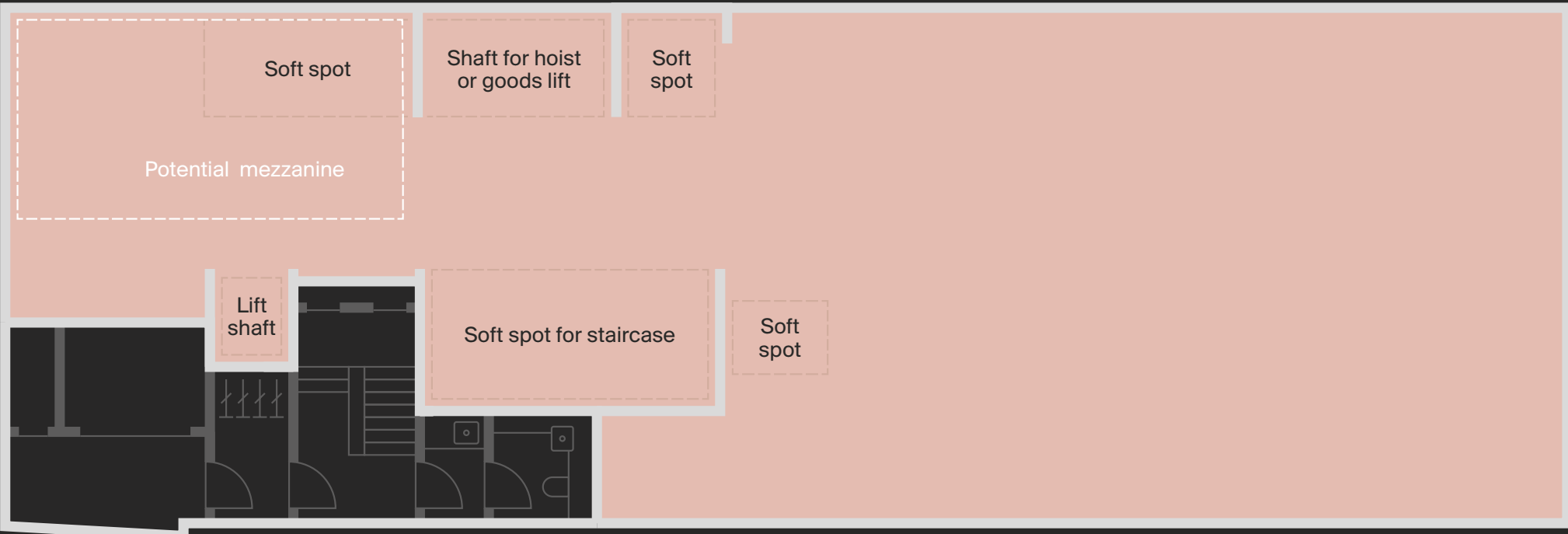
COURTYARD
503 sq ft / 47 sq m

CEILING HEIGHT
Gallery front 3.5m
Gallery rear 4.05m (apex 5.4m)

Lower Ground Floor Plan

Gross internal area (GIA)
3,148 sq ft
293 sq m

Mount Row



POTENTIAL MEZZANINE

409 sq ft / 38 sq m

CEILING HEIGHT

Gallery front 5.4m to structural soffit

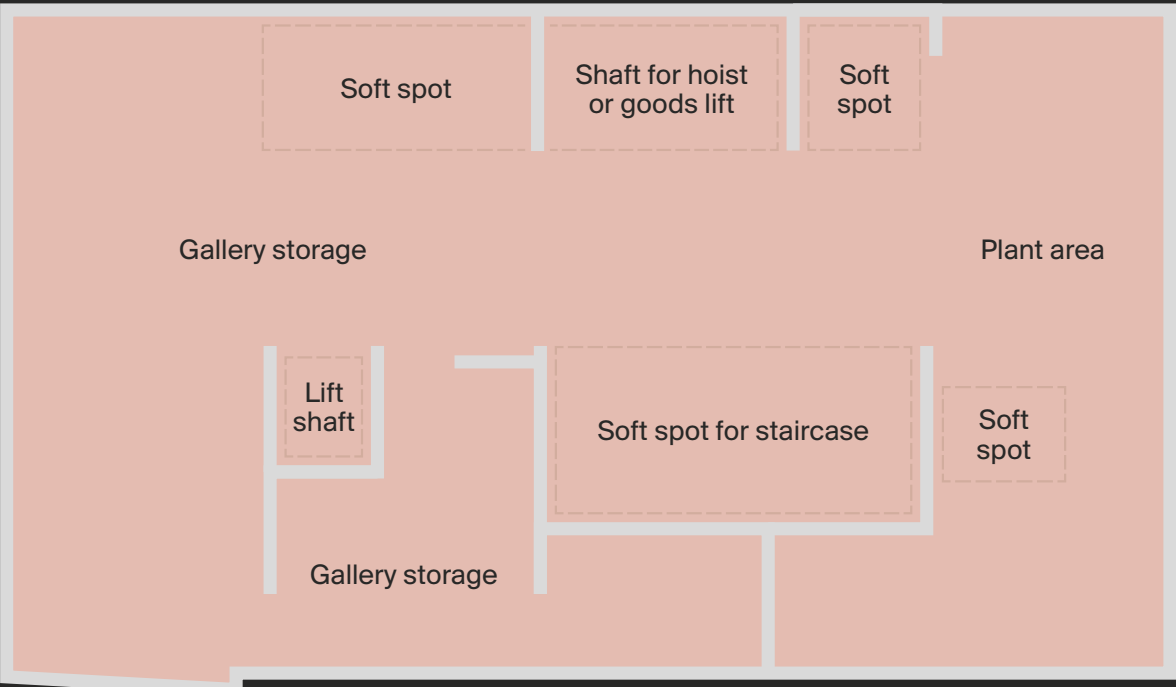
Gallery rear 4.85-5.5m

Potential mezzanine 2.3m

Basement *Plan*

Gross internal area (GIA)
2,136 sq ft
198 sq m

Mount Row



CEILING HEIGHT
3.1m to structural soffit